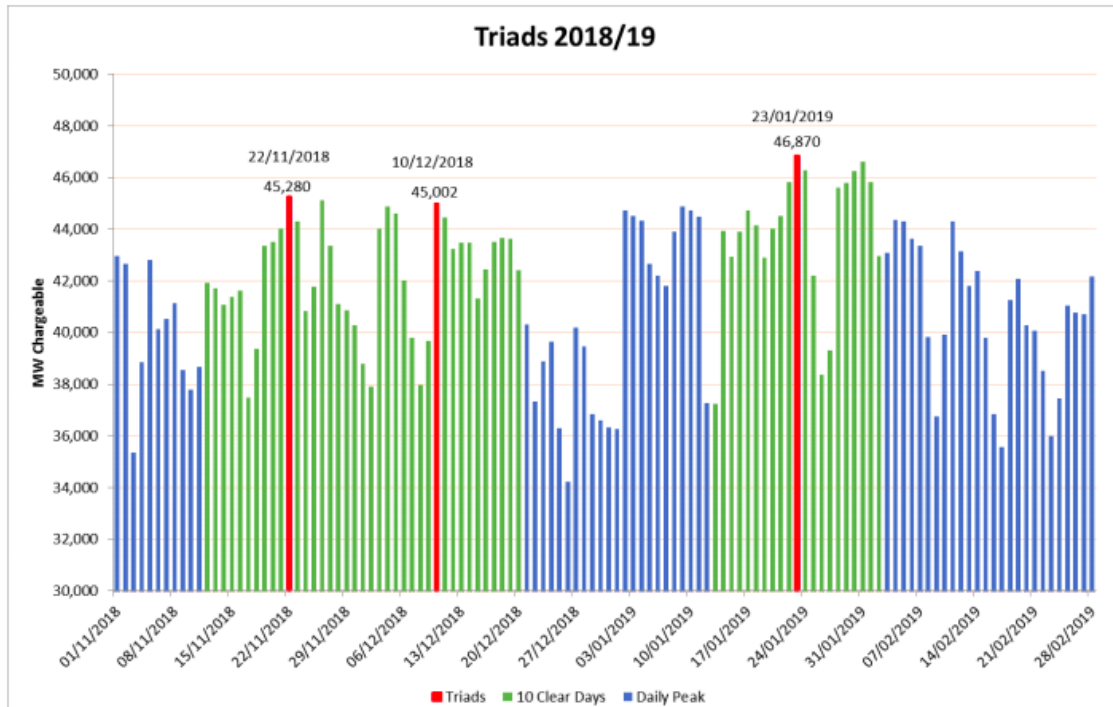


# Triads Explained...

We can help you take action to protect yourself against rising TNUoS Costs...

## How they work...

Triads are the 3 HH periods, with the highest system demand between 1<sup>st</sup> November and 28<sup>th</sup> February. These HH periods lie between 16:30 and 18:30 (the periods of higher coincidental demand in the country) and are stipulated to be at least 10 days apart. The National Grid will implement a charge, passed onto your energy bill, which is based on our site's average energy consumption on each of these 3 HH periods and charged at the respective tariff rate that applies to your site's location in the UK (see below table).



## Changing Tariff Rates...

In all areas of the UK (bar Northern Scotland), TNUoS Tariffs have increased in comparison to last year with this years' annual change exhibiting some rather significant changes. As the table below details, most zones are exhibiting considerable increases and as such your company's TNUoS costs could escalate if they are unmanaged.

| Zone | Zone Name          | 2019-20 HH Demand Tariff (£/kW) | 2018-19 HH Demand Tariff (£/kW) | HH Demand Tariff Variance (£/kW) | HH Demand Tariff Variance (%) |
|------|--------------------|---------------------------------|---------------------------------|----------------------------------|-------------------------------|
| 1    | Northern Scotland  | 20.97                           | 26.30                           | -5.33                            | -20.27%                       |
| 2    | Southern Scotland  | 30.76                           | 29.07                           | 1.68                             | 5.80%                         |
| 3    | Northern           | 41.03                           | 37.82                           | 3.21                             | 8.49%                         |
| 4    | North West         | 47.83                           | 43.81                           | 4.03                             | 9.19%                         |
| 5    | Yorkshire          | 48.04                           | 44.07                           | 3.97                             | 9.00%                         |
| 6    | N Wales and Mersey | 49.35                           | 45.51                           | 3.83                             | 8.42%                         |
| 7    | East Midlands      | 51.44                           | 47.50                           | 3.94                             | 8.29%                         |
| 8    | Midlands           | 52.93                           | 48.80                           | 4.13                             | 8.47%                         |
| 9    | Eastern            | 53.79                           | 49.43                           | 4.36                             | 8.82%                         |
| 10   | South Wales        | 49.73                           | 45.80                           | 3.92                             | 8.56%                         |
| 11   | South East         | 56.11                           | 52.11                           | 4.00                             | 7.68%                         |
| 12   | London             | 59.18                           | 54.91                           | 4.27                             | 7.78%                         |
| 13   | Southern           | 57.34                           | 53.42                           | 3.92                             | 7.34%                         |
| 14   | South Western      | 55.69                           | 51.87                           | 3.82                             | 7.36%                         |

## How we can help...

While these tariffs are non-negotiable, in that they are published annually by the National Grid, you can look to reduce the impact that they have on your energy spend. With our help you can look to reduce your usage during the half hourly periods that we predict on the day are likely to be a Triad.

### Warnings...

We send our Triad Warnings to energy only customers throughout the four-month period. These warnings will aim to predict the half hourly period that the Triad is likely to fall in, based on high forecasted national demand on that particular day. Your site reducing consumption over the outlined period, on the days that we predict a Triad will occur, will reduce the impact of these costs on your energy spend.

We aim to call no more than 20 warnings over the four-month period, in order to limit any potential detrimental effect to your production process. These warnings are sent, by email, before 11am, giving your site enough notice to plan and implement consumption reducing measures during the half hourly period that we have predicted.

### Triad Response Performance Reports

As well as our Triad Warnings, you can also sign up to receive our Triad Response Performance Reports the day after a Triad Warning has been issued. These reports detail your sites consumption profile on the day we issued our warning, against your Triad usage from the previous year, allowing you to analyse the efficacy of the consumption reduction measures you have implemented and to analyse your forecast Triad costs.

We also issue an Annual Summary Report as soon as the three HH Triad periods have been confirmed by the National Grid following the conclusion of the four-month period. This report analyses your annual performance and estimates your forecast TNUoS costs for the next 12 months. Taking this proactive approach to Triad management and taking steps to reduce this increasingly significant portion of your energy bill can result in considerable cost savings for your business.




---

### TRIAD AVOIDANCE WARNING

---

Brownlow Utilities are reporting that there is a possibility of a TRIAD occurring between the times detailed below:

---

|       |                          |
|-------|--------------------------|
| ON:   | Monday, 7 November, 2016 |
| FROM: | 16:30                    |
| TO:   | 18:30                    |

---

Consequently, we believe that it is advisable to reduce your energy consumption if appropriate. This comes as temperatures in the UK are forecast to be low both today and tomorrow before some forecast increases over the next 10 days.


If you have any queries or would like to discuss your TRIAD Warnings in more detail, please feel free to contact your dedicated Account Manager or contact our office on (+44) 1744 778 530

---

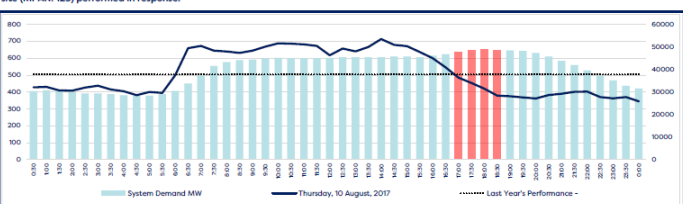
Luke Connelly | Brownlow Utilities Ltd  
Energy & Carbon Analyst  
Phone: 01695 589 248  
Mobile: 07837 966803  
Email: [luke@brownlowutilities.co.uk](mailto:luke@brownlowutilities.co.uk)  
Website: [www.brownlowutilities.co.uk](http://www.brownlowutilities.co.uk)

**Company Name**  
**Site Name**

**Triad Day Plus One  
Performance Report**



Following yesterday's Triad warning, issued by Brownlow Utilities, below provides an evaluation of how **Company Name's** site (MPAN: 123) performed in response. Friday, 11 August, 2017



| Forecast National TRIAD   | Time  | National Demand (MW) |
|---------------------------|-------|----------------------|
| Thursday, 10 August, 2017 | 18:00 | 48.771               |

| Forecast National TRIAD   | Time  | Client Demand (kW) | Site Triad Demand 2016-17 (kW) | % Variance from Last Year |
|---------------------------|-------|--------------------|--------------------------------|---------------------------|
| Thursday, 10 August, 2017 | 18:00 | 419.80             | 504.00                         | -16.7%                    |